



West Freemason Civic League Meeting
January 17, 2024



surveyNFK

norfolk historic resource survey

Norfolk Architectural Survey Update Workplan (2020)

Threats

- Sea-level rise
- Redevelopment
- Neglect
- Demolition
- Uncomplimentary infill

Themes

- Annexations and Associated Development
- Civil Rights and Women's Rights Movements
- Education
- Ethnic Heritage
- Funerary
- Industry
- Lesbian, Gay, Bisexual, and Transgender (LGTBQ) Heritage
- Military/Defense
- Post-World Wars Residential and Commercial Development
- Tourism/Social/Recreation
- Transportation

Priorities

- Revisiting previously recorded resources
- Survey of threatened areas
- Ethnic heritage survey
- Survey/nomination update for National Register-listed or eligible districts
- Historic district designations and expansions
- Context study of city annexations
- Cemeteries survey
- Other theme-specific research
- Policies for demolition
- Data storage
- Project management beyond five years



surveyNFK
norfolk historic resource survey



501-509 Botetourt Street

West Freemason Survey

- National Register Update
- Update of the history to include the last *100 years*
- Re-evaluate boundary



327 W Bute Street

West Freemason Boundary Update



- Period of Significance updated to 1790-1972
- Inclusion of Mid-Century building styles

West Freemason Boundary Update



227 W York Street, ca. 1941



223 W York Street, ca. 1946



230 W Bute Street, ca. 1938

West Freemason Boundary Update

209 W Freemason
Street, ca. 1910



211 W Freemason
Street, ca. 1955



403 Boush Street,
ca. 1986



432 W
Freemason
Street, ca.
1968



Local Individual Property Forms



256 W Freemason Street

- Style: Italianate
- Built date: at least 1869

Local Individual Property Forms



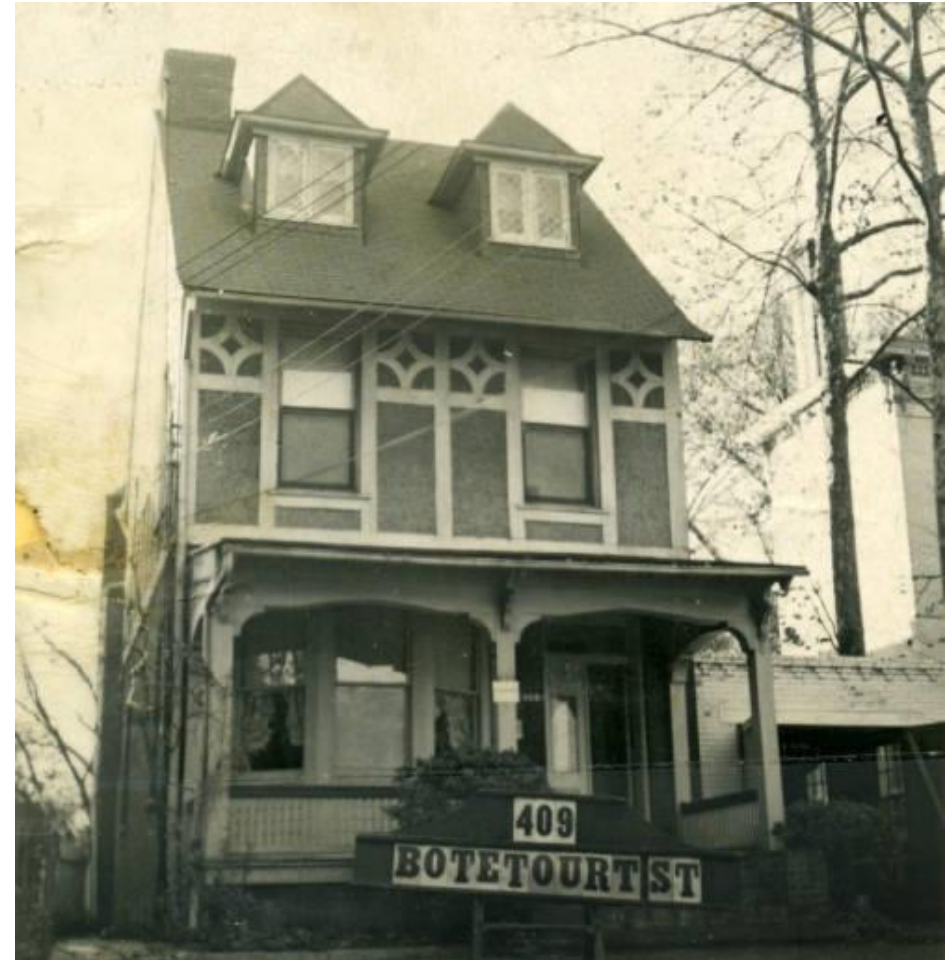
327 W Bute Street

- Style: Colonial Revival Commercial
- Built date: 1948

409 Botetourt Street

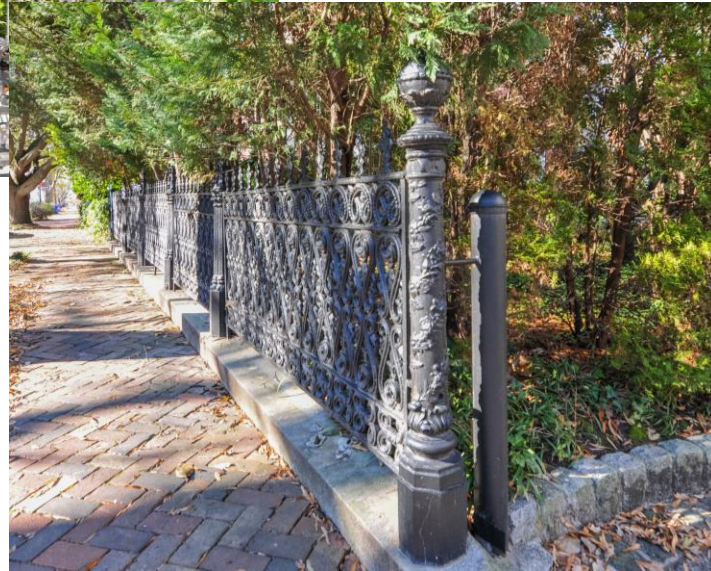


Photograph taken December 20, 2023.



Photograph taken November 24, 1948.

320 W Freemason Street



Photographs taken December 20, 2023.



Historic Tax Assessor photograph.



surveyNFK
norfolk historic resource survey

Susan McBride

susan.mcbride@norfolk.gov

757-319-1885

Faith Hamman

Faith.Hamman@norfolk.gov

757-334-8789

www.norfolk.gov/surveynfk